

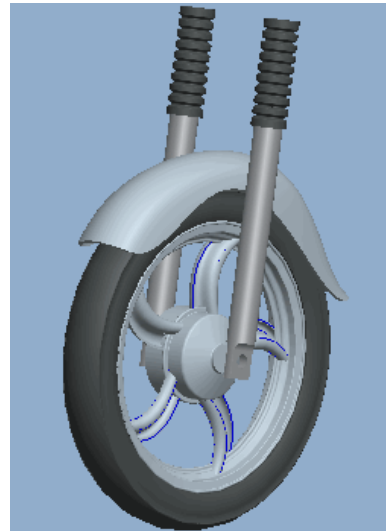
Freeform Surfacing using Pro/ENGINEER Wildfire 5.0

Overview

Course Code **TRN-2237-T**

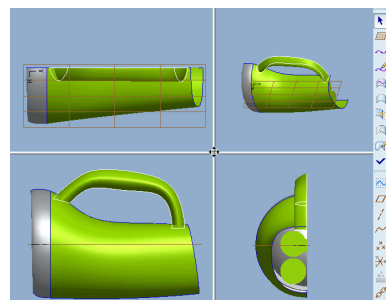
Course Length **2 Days**

In Pro/ENGINEER Wildfire 5.0 you can create freeform surface models using the interactive surface design extension (ISDX) modeling environment, often called Freeform Surfacing or Style surfacing. The Style tool is a spline-based freeform modeler that enables you to combine the parametric feature-based modeling approach with the unconstrained freeform surface modeling approach. This gives you the flexibility to design complex-shaped products in a single modeling environment. In this course, you will learn how to use the Style tool to create and manipulate freeform curves, freeform surfaces, freeform surface details, and advanced freeform surface models. You will also learn how to integrate style features with other parametric features in design models. After completing this course, you will be well prepared to design complex-shaped freeform surface models in Pro/ENGINEER Wildfire 5.0. At the end of each module, you will complete a set of review questions to reinforce critical topics from that module. Your instructor will discuss these with the class. At the end of the course, you will find a course assessment in Pro/FICIENCY intended to evaluate your understanding of the course as a whole.



Course Objectives

- Introduction to the Freeform Surface Modeling Process
- Understanding Freeform Surface Modeling Concepts
- Creating Initial Freeform Curves
- Developing Freeform Surface Models
- Advanced Tools and Techniques for Defining Freeform Shapes
- Creating Smooth Freeform Surface Models



- Integrating Style and Parametric Features
- Techniques for Creating Common Detailed Shapes
- Creating Complex, High Quality Freeform Models

Prerequisites

- Introduction to Pro/ENGINEER Wildfire 5.0.

Audience

- Design engineers, mechanical designers, who have a need to create styled surface geometry.
-

Agenda

Day 1

- | | | |
|--------|---|---|
| Module | 1 | Introduction to the Freeform Surface Modeling Process |
| Module | 2 | Understanding Freeform Surface Modeling Concepts |
| Module | 3 | Creating Initial Freeform Curves |
| Module | 4 | Developing Freeform Surface Models |

Day 2

- | | | |
|--------|---|--|
| Module | 5 | Advanced Tools and Techniques for Defining Freeform Shapes |
| Module | 6 | Creating Smooth Freeform Surface Models |
| Module | 7 | Integrating Style and Parametric Features |
| Module | 8 | Techniques for Creating Common Detailed Shapes |
| Module | 9 | Creating Complex, High Quality Freeform Models |
-