

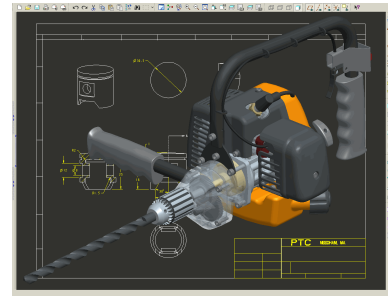
Introduction to Pro/ENGINEER Wildfire 4.0

Overview

Course Code TRN-2169-T

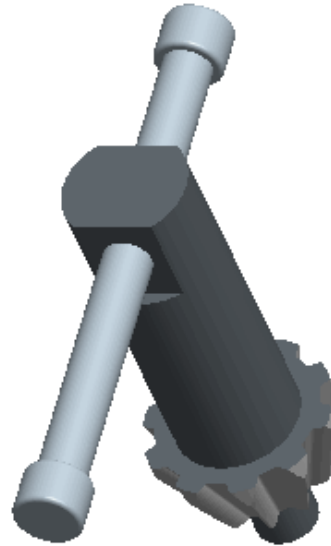
Course Length 5 Days

This course is designed for new users who want to become proficient with Pro/ENGINEER Wildfire 4.0 as quickly as possible. You will focus on learning core-modeling skills in this comprehensive, hands-on course. Topics include sketching, part modeling, assemblies, drawings, and basic model management techniques. The course also includes a comprehensive design project that enables you to practice your new skills by creating realistic parts, assemblies, and drawings. At the end of each module, you will find a set of review questions to reinforce critical topics from that module. Your instructor will discuss these with the class. At the end of the course, you will find a course assessment in Pro/FICIENCY intended to evaluate your understanding of the course as a whole. After completing the course you will be well prepared to work effectively on product design projects using Pro/ENGINEER Wildfire.



Course Objectives

- Learning the basic Pro/ENGINEER Design Process
- Understanding Pro/ENGINEER concepts
- Learning how to use the Pro/ENGINEER interface
- Selecting and editing items
- Sketching geometry and using tools
- Creating sketches for features
- Creating datum planes and datum axes
- Creating extrudes, revolves, and ribs
- Utilizing internal sketches and embedded datums
- Creating holes, drafts, and shells
- Creating sweeps and blends
- Creating rounds and chamfers
- Grouping, copying, and mirroring items
- Creating patterns
- Measuring and inspecting models
- Assembling with constraints
- Assembling with connections
- Exploding assemblies
- Creating drawing views
- Creating drawing details
- Using layers
- Investigating parent/child relationships
- Capturing and managing design intent
- Resolving failures and seeking help
- Comprehensive Design Project



Prerequisites

- None

Audience

- This course is intended for product designers, drafters, industrial/conceptual designers, and routed systems designers. People in related roles will also benefit from taking this course.
-

Agenda

Day 1

Module 1	Introduction to the Pro/ENGINEER Wildfire Basic Modeling Process
Module 2	Understanding Pro/ENGINEER Concepts
Module 3	Using the Pro/ENGINEER Interface
Module 4	Selecting and Editing
Module 5	Creating Sketcher Geometry

Day 2

Module 6	Using Sketcher Tools
Module 7	Creating Sketches for Features
Module 8	Creating Datum Features: Planes and Axes
Module 9	Creating Extrudes, Revolves, and Ribs
Module 10	Utilizing Internal Sketches and Embedded Datums
Module 11	Creating Sweeps and Blends

Day 3

Module 12	Creating Holes and Shells
Module 13	Creating Rounds and Chamfers
Module 14	Group, Copy, and Mirror Tools
Module 15	Creating Patterns
Module 16	Measuring and Inspecting Models

Day 4

Module 17	Assembling with Constraints
Module 18	Assembling with Connections
Module 19	Exploding Assemblies
Module 20	Creating Drawing Views
Module 21	Creating Drawing Details
Module 22	Using Layers

Day 5

Module 23 Investigating Parent/Child Relationships

Module 24 Capturing and Managing Design Intent

Module 25 Resolving Failures and Seeking Help

Module 26 Project
